



ix NEW FEATURES

UNITED PLANET INTREXX XTREME
RELEASE 4

General

Portal Layout

Portlets can now be moved onto the page via Drag & Drop and adjusted for size with the mouse. Configuration has been made significantly easier.

As of now, an individual portal page can be defined for each menu item in the Menu Designer. The portlets for the corresponding portal page will be defined in the browser as usual.

Longtext Fields

All longtext fields will be moved upon refresh from separate tables into the table of the data group. Longtext fields will no longer be stored outside of the table. This increases the usability of BizWalker, among other benefits.

As with every version, we have improved many details as well.

New in Intrexx Center

Portal Export

The setting to *Overwrite Previous Export* can now overwrite the last export with a new portal export.

Portal Properties

Port and proxy settings can now be reached directly on their own tabs under portal properties. For proxies, rules can be defined.

On the new *Options* tab, the Messenger can be activated and deactivated, *User Tracking* turns on user-specific tracking in the system application *Statistics*, and *Yellow Fade* highlights in yellow, using a partial refresh (Ajax), changes to pages for a short time.

New in the Application Designer

Search

The search can now submit a filter per data group, allowing, for example, locked entries to be filtered out of the results. Searching within tags, entered using the new *Tagging* control, is possible.

Tables

All dialogs were overhauled and made easier to use.

In tables, any number of buttons and/or links can be added and configured individually. In text fields, the text length can now be limited and an omission character displayed (such as ...), attached to the last character.

Edit and View Fields

Edit fields and view fields can now be entered without creating a link to a data field. Optimum use of this feature is in connection with web services or expansion using JavaScript.

The maximum character length can also now be entered for edit fields. For view fields with the control type *Text*, text can now be shown in HTML. This also applies for *Shorttext* fields embedded in tables.

Control Element *Calendar*

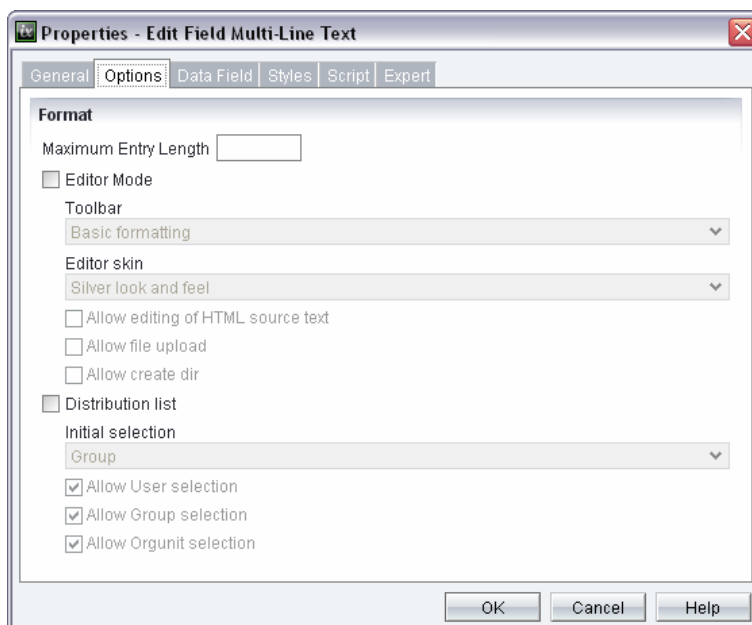
A calendar control can now be inserted into each application. Assignments of date fields, the title, and so on will be defined in a dialog. In the browser, the element makes it possible to move appointments via Drag and Drop. The control has an especially elastic feel to it through the use of Ajax. The new calendar control can show dates from other calendars and highlight appointments in color.

Control Element *Tagging*

Tagging allows for an RDF-compliant description of data sets. The control element can be placed within applications and filled with tags, comments, and evaluations. The element offers an edit view to distinguish the data records, a word cloud for overviews, and a list view for tags.

Tagging makes it possible to view tags for all users, the tags of a specific user, integration into search and much more.

Edit Element Text Field



The *Distribution List Selection* you can now set the initial selection. Also new are the three settings *Allow User Selection*, *Allow Group Selection* und *Allow Orgunit Selection*.

Edit / Show Links Menu

With this new function all linked elements of the selected element will be shown in the lower area of the workspace.

View Element *Repeating Grouping*

The repeating grouping can be duplicated, with the elements contained in it, with the new button action *Duplicate Grouping*. The repeating grouping element will be used for web services in order to enter a range of values for a methods call or to show return values of a request.

Tooltip Dialogs

In addition to popup windows, edit and output pages can also be opened in tooltips. Through this, completely new types of applications can be created, handling will be optimized, and performance and flexibility will be significantly increased. Above all,

in combination with the numerous buttons in tables and the continuous use of Ajax, comprehensive data sets can be administered significantly quicker. Applications can be constructed more attractively and more clearly laid out.

Primary Keys in Foreign Data Groups

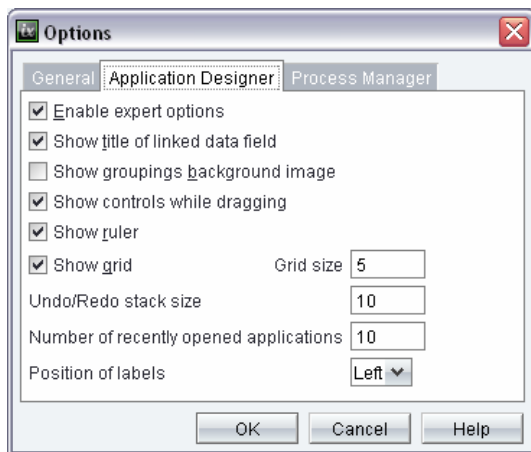
A Primary Key column in a foreign data group can now be defined as the Primary Key and Foreign Key at the same time. This allows multiple Primary Key columns to be combined as well, as frequently encountered in ERP systems (such as orders and order items).

Workspace with Ruler

The current coordinates of the mouse pointer on the workspace will now be shown on a ruler.

Background Images in Groupings

In the Portal Designer, images can be used as a background for groupings. In the options of the Application Designer, the display of these background images for groupings can now be set in the workspace of the Application Designer.



Automatically Created Titles

The *Position of labels* now defines whether the titles, which you can automatically create via the context menu for elements that are created, should be assigned to the left or above the element on the workspace.

Thousands Separator, Decimal Separator, and Leading Zeros

For correct formatting of thousand and decimal separator characters and leading zeros in edit fields (type *Integer*, *Decimal Number*, *Currency*), the current language setting of the portal can now be used.

Datapicker

The button action *Datapicker* can now filter source data as well.

Application Import / Export

You can now *select all applications* or *select no applications* from the context menu when importing or exporting applications.

Language Switch

When switching languages in the Application Designer with the globe symbol, the setting *Default Portal Language* can now be selected in addition to the individual languages.

View Element Image Selection

On the *Options* tab in the properties dialog, the *maximum size* of the image can be defined. Enter the *height* and *width* of the image in pixels. Larger images will thereby be proportionally reduced; smaller images will not be changed.

New in Portal Designer

The Portal Designer now supports setting styles for:

- Tabs (search, tab menu, etc.)
- Calendar controls
- Popup windows
- Tooltip windows

Ruler

The current coordinates of the mouse pointer on the workspace will now be shown on a ruler.

Frameless Main Application Area

The main application area can now work without frames. The title page, the application menu, and the main application area will be combined in one. With the new menu type *Dropdownmenu* and additional controls, it is possible to work with a completely frameless layout. All mouse clicks will take place via Ajax/Hijax. Only the areas of pages that change will be refreshed. With the frameless layout, an enormous performance increase can be expected, as significantly less must be reloaded and processed. The number of requests will also be drastically minimized.

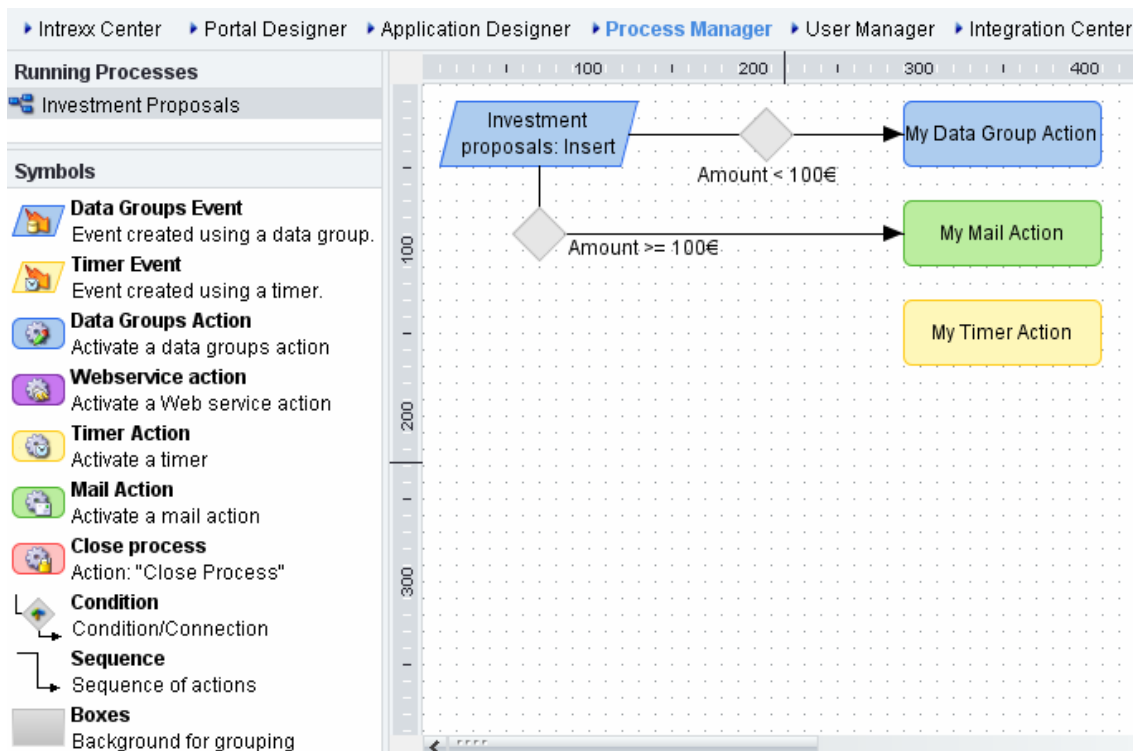
Logoff Button

With this new additional control, users can log out of the portal.

New in Process Manager

In the Process Manager, processes can now be structured graphically. With a toolbar, processes can be visually constructed on a workspace. The view of existing processes can be switched between tree view and graphical view.

Web service actions can now also be executed in the Process Manager.



New in the User Manager

Generic Authentication

The generic authentication allows for configuration of an authentication module authentication via LDAP server. In this case, transmission of the user name and password will take place in plaintext. Please ensure that login is only established over secure connections.

Other Authentication

Other authentication modules can be developed to your specifications. For example, authentication via X509 certificates, authentication via third-party systems, etc. can be put into use.

User Import from JDBC Data Sources

Users can now be imported with synchronization and group membership from JDBC data sources.

New in Tools

Provide Web Services

With this tool, web services can be provided for use from Intrex. The methods that will be provided will be configured here. After selecting the application and data group, methods for deleting, changing, newly creating, and selecting data records can be configured. Additionally, these web services will be made available for use in other web service environments.

Authentication takes place via login methods that ensure secure access to data. Via the web service provider, all data in the portal can be made usable to third party systems.

Consume Web Service

Using this tool, WSDL descriptions can be downloaded from the internet. A WSDL describes all methods of a web service. The Application Designer and the Process Manager can then access these configured web services.

One or more web service requests can be called up upon loading a page. The methods of the web service can be defined using parameters.

Parameters that can be set:

- Static values
- Return values from completed web service requests
- Values that are provided via the request within the page for use
- Values that can be accessed via Velocity

The return values of the corresponding method requests can be assigned to input or output elements.

A second possible use of web services is the so-called Datapicker, or action mode: in this case, the web service will be configured by the button and called by Ajax. Preexisting entries or static values can be used as parameters. The return values of the methods can be assigned to existing input or output elements.

A third possible use of web services is provided by the Process Manager. Here as well, web services can be used in the same ways as in the Application Designer.

New in Applications

Weblog

The *Weblog* template has been greatly optimized.

Statistics

The system application *Statistics* now offers user tracking, which you can activate in the portal properties.